

Advantage Lubricants Engineering for Industry



# RANDOMIX M11

เครื่องผสมน้ำยาหล่อเย็น



ISO 9000:2008



[www.98Oils.com](http://www.98Oils.com)



# RANDOMIX M11

## Mixing Fluids Concentrate Equipment





## **Specification:**

Designed for industrial appliances, using in mixing cutting fluid coolant concentrate with water. The whole appliance directly locks on the 50 gallon coolant tank, there's the adjustable ratio knob on the upper side.

One side connects to water, and the other one flows out the fixed ration coolant liquid; it only needs the water pressure to drive the mixer. When refilling the machine, just open the water supply.



- > It can save the coolant.
- > Compared with the manual mixing, it can save the labor cost.
- > To install and operate easily; durable and reliable.
- > It can keep adjusting, increasing to mix. The water-drop typed of fixed amount diameter is 0- 5mm. (It's quite accurate when providing the lower flow.)
- > The mixer is provided with the standard thread adapter which can apply to all standard tanks, and also can be used with the opening container. (To be fixed by user and it can work.)
- > Unique spray nozzle/system which can avoid obstructing



## **Operations:**

1. Lock the mixer on the 50 gallon tank, turn tightly to fix height knob. (Or other small container with the same thread, and the height can be adjusted freely. If the thread is different, it also can be put against the wall and fixed properly. Then it can work.)
2. Connect the 5/8" soft water pipe of water inlet faucet (or water pressurization motor) with the inlet end of mixer.

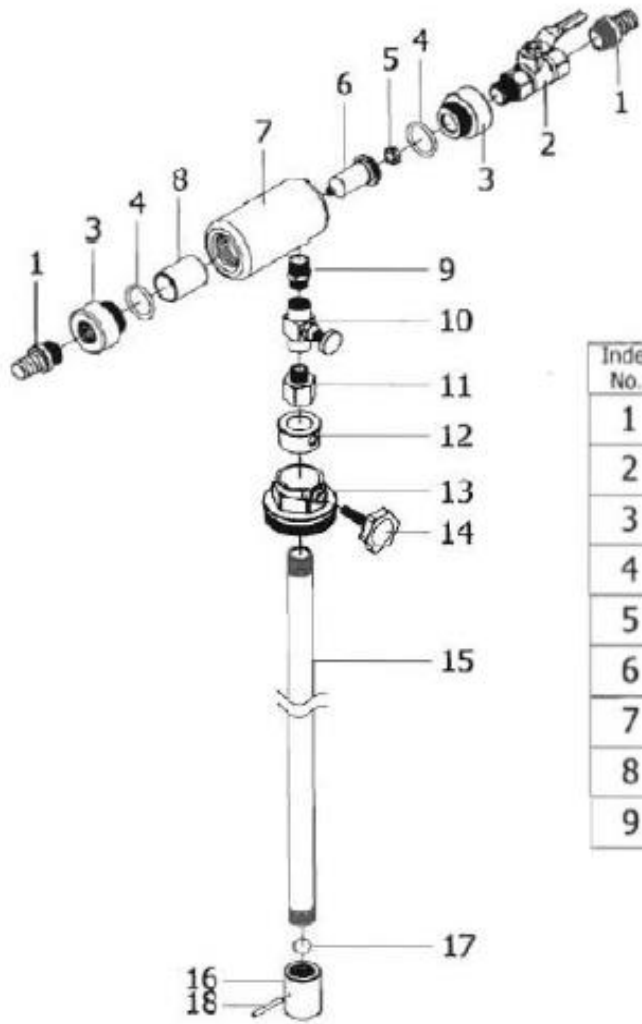
Besides, the outlet end of mixer is also connected with another 5/8" soft water pipe, and put to the outlet area of finished cutting fluid coolant and water.



3. Rotate the adjustable ratio knob (the aperture diameter is 0-5mm; the ratio is proportional to water pressure) to adjust to the ratio you need.
  
4. Open the water inlet valve.
  
5. Open the water inlet faucet and water pressurization motor, and then start to work. The water outlet is the mixture of finished cutting fluid coolant and water. To adjust the ratio knob slightly depends on the mixture's ratio until it reaches the ratio you need.

- เครื่องผสมน้ำยาหล่อเย็น การผสมสารหล่อเย็นกับน้ำอย่างถูกวิธีจะช่วยให้น้ำมันหล่อเย็นที่ผสมน้ำแล้วมีความคงสภาพและลดต้นทุนได้มากขึ้น





Index No.	Parts No.	Q'ty	Description
1	A1191-1	2	INLET
2	A1191-2	1	Water Inlet Valve
3	A1191-3	2	Adapter
4	A1191-4	2	O Ring
5	A1191-5	1	Helix Adapter
6	A1191-6	1	Injector
7	A1191-7	1	Mix Body
8	A1191-8	1	Outlet Adapter
9	A1191-9	1	Adapter

Index No.	Parts No.	Q'ty	Description
10	A1191-10	1	Adjustable Ratio Knob
11	A1191-11	1	Adapter
12	A1191-12	1	Tube Hold
13	A1191-13	1	Tank Stand
14	A1191-14	1	Height Knob
15	A1191-15	1	Tube
16	A1191-16	1	Check Valve
17	A1191-17	1	Steel Ball
18	A1191-18	1	Pin